



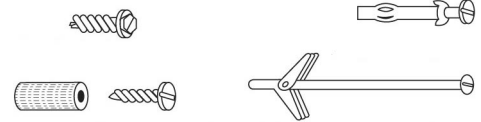
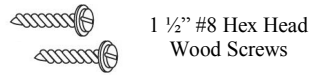
INDUSTRIES INC.

Clutch Operated Single Shade Installation Instructions

Please follow these Installation Instructions

You will need a pencil, tape measure, drill, screwdriver, pliers, and appropriate fasteners.

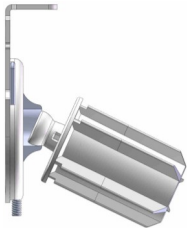
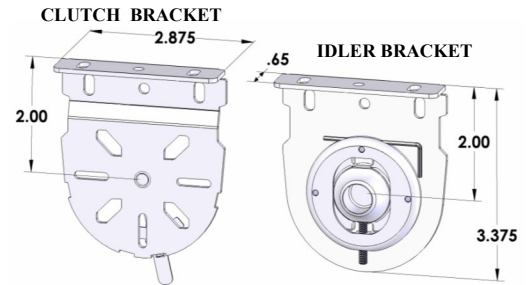
Choose the Correct Fastener



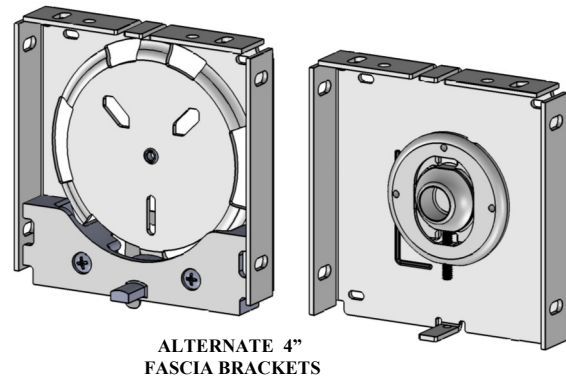
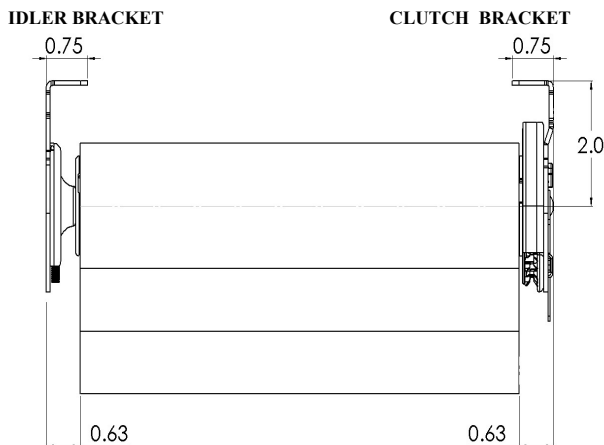
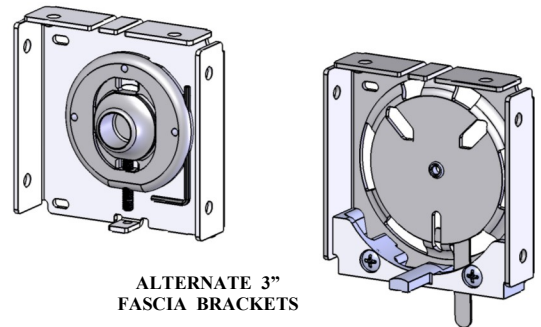
Alternative fasteners should be used for aluminum or concrete

Installation Instructions:

1. Screw the clutch side bracket in place.
2. Screw the idler side bracket in place. Make sure both brackets are correctly lined up and leveled.
3. Pick up the roller shade with the clutch and slid it to the idler bracket. Innovative design of the idler and idler bracket allows the shade to be suspended from the idler bracket at severe angle as shown on the illustration.
4. Press the spring loaded idler pin into the idler side bracket.
5. With the idler pin depressed as far as possible, raise the clutch side of the shade and slide it into the clutch bracket.
6. Press the clutch down until the hooks on the clutch engage the slots on the bracket.
7. Swing the arm on the bracket toward the center securing the clutch in place.



Innovative collapsible idler allows for easy, one person installation by resting boll-end of the spring loaded shaft on the idler while rotating clutch end of the shade into clutch bracket.



CIERA Industries Inc.
Valencia CA

661-263-8505 Phone
661-263-8305 Fax
sales@cierainc.com E-mail
www.cierainc.com Website