



INDUSTRIES INC.

Motorized Single Shade Installation Instructions

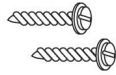
AC Motorized Single Roller Shade System

Note: The maximum size of the shade is subject to weight limitations of an individual motor. Alternative fasteners should be used for aluminum or concrete installations (Not Included with Blinds)

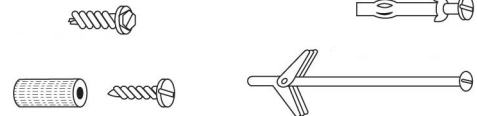
Please follow these Installation Instructions

You will need a pencil, tape measure, drill, screwdriver, pliers, and appropriate fasteners.

Choose the Correct Fastener



1 1/2" #8 Hex Head Wood Screws



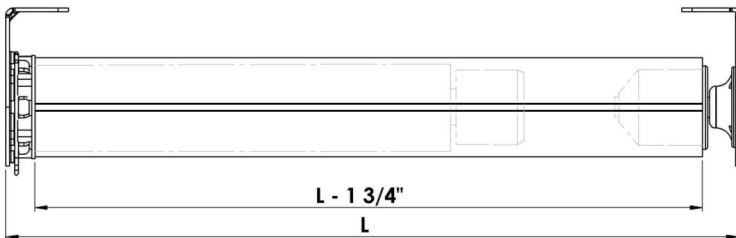
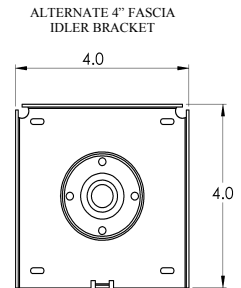
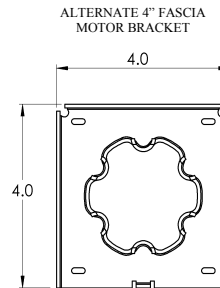
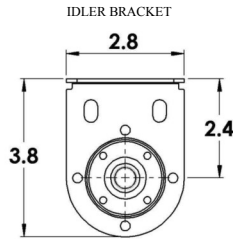
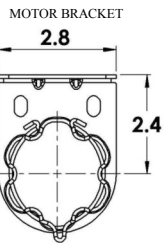
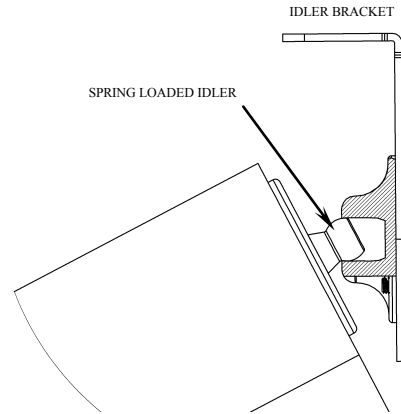
Alternative fasteners should be used for aluminum or concrete installations

Please follow these Installation Instructions

You will need a pencil, tape measure, drill, screwdriver, pliers, and appropriate fasteners.

Installation Instructions:

1. Screw the motor side bracket in place.
2. Screw the idler side bracket in place. Make sure both brackets are correctly lined up and leveled.
3. Pick up the roller shade with the motor and slid it to the idler bracket. Innovative design of the idler and idler bracket allows the shade to be suspended from the idler bracket at severe angle as shown on the illustration.
4. Press the spring loaded idler pin into the idler side bracket.
5. With the idler pin depressed as far as possible, raise the motor side of the shade and slide it into the motor bracket. Make sure both pins are supporting the motor in place.
6. With the shade leveled, secure motor to the motor bracket with the spring wire clip provided.
7. Follow the motor programming instructions included with the installation brackets.



CIERA Industries Inc.
Valencia CA

661-263-8505 Phone
661-263-8305 Fax
sales@cierainc.com E-mail
www.cierainc.com Website